

MR STUART JOHNSTON

Archaeologist

Brad Goode & Associates Pty Ltd

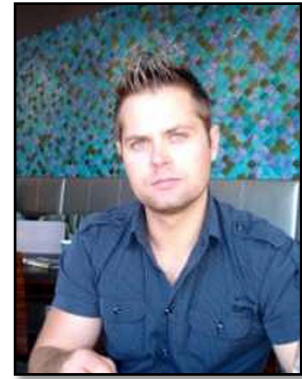


Figure 5: Mr Johnston.

PERSONAL PARTICULARS

Mr Stuart Johnston grew up and lives in Perth and completed a Bachelor of Arts in 2008 and then completed a second class honours degree in Archaeology in 2009. Mr Johnston has been employed as a consulting archaeologist with Brad Goode and Associates Pty Ltd since 2011.

EDUCATIONAL BACKGROUND

- 2008 Bachelor of Arts completed at the University of Western Australia (Majoring in History and Archaeology)
- 2009 Honours completed in 2009 at the University of Western Australia (Second Class Honours in Archaeology)

RELEVANT EMPLOYMENT DETAILS

2011 to present Consulting Archaeologist with Brad Goode & Associates Pty Ltd

PROFESSIONAL ASSOCIATIONS

Member of AAPCAA (The Australasian Association of Anthropologists and Archaeologists)

ARCHAEOLOGICAL EXPERIENCE

Conducted heritage surveys and archaeological monitoring in Ascot, Badgingarra, Bolgart, Beverley, Belmont, Bruce Rock, Bunbury, Cannington, Dandaragan, Donnybrook, Gosnells, Hopetoun, Kemerton, Midland, Myalup, Mt Richardson, Newman, North Bannister, Picton, Port Hedland, Ravensthorpe, Wellstead, Windarling, Windy Harbour, and Wyalkatchem.

Samples of projects that Mr Johnston has conducted archaeological field surveys, site recording or archaeological monitoring on behalf of Brad Goode & Associates Pty Ltd include:

- 2013 NGH Environmental – *Report of an Aboriginal heritage survey of a Department of Housing Sub-division at Glen Iris Bunbury*
- 2013 AECOM City of Gosnells – *Report of an Aboriginal heritage survey of Burslem Drive Bridge Duplication Project, Maddington, Western Australia*
- 2013 GHD City East Alliance – *Compliance Report on Ministerial Consent conditions for upgrade of the Great Eastern Highway adjacent to Site ID 3536 Swan River, Ascot, Western Australia*
- 2013 City of Wanneroo – *Brazier Road, Yanchep*
- 2012 Landcorp SWALSC – *Report of an Aboriginal Heritage Survey of Lots 97 (R3727) – 124 (R9683) and UCL 377-378 in Beverley, Western Australia*
- 2012 City of Bunbury – *A report of an archaeological survey for the City of Bunbury Waste Depot*